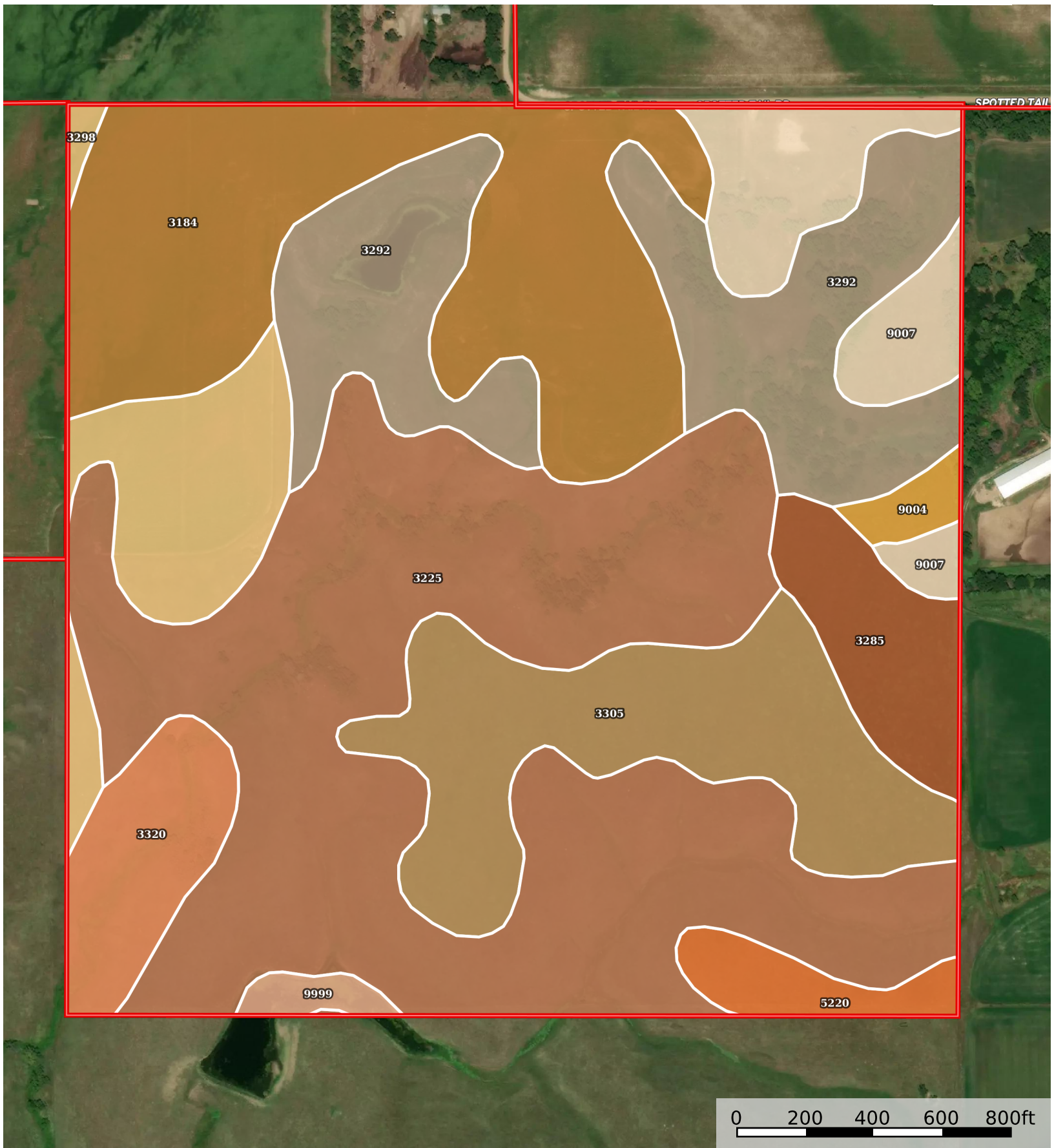



480 +/- Acres, Keya Paha County, NE - Auction

Nebraska, AC +/-



 Boundary

|  Boundary 159.72 ac

SOIL CODE	SOIL DESCRIPTION	ACRES	%	CPI	NCCPI	CAP
3225	Labu-Sansarc silty clays, 9 to 35 percent slopes	55.84	34.96	33	25	6e
3184	Jansen loam, 2 to 6 percent slopes	27.52	17.23	53	43	3e
3292	Paka-Mariaville loams, 11 to 30 percent slopes	22.48	14.07	0	28	6e
3305	Reliance silt loam, 2 to 6 percent slopes	18.03	11.29	86	53	3e
3298	Ree loam, 0 to 3 percent slopes	9.34	5.85	85	52	2c
9007	Anselmo fine sandy loam, 0 to 3 percent slopes	9.03	5.65	59	41	2e
3320	Sansarc silty clay, 9 to 35 percent slopes	6.23	3.9	0	18	7e
3285	Paka loam, 0 to 2 percent slopes	6.08	3.81	0	56	2c
5220	Onita silt loam, 0 to 2 percent slopes	2.87	1.8	94	60	2c
9004	Anselmo fine sandy loam, 3 to 6 percent slopes	1.24	0.78	54	40	3e
9999	Water	1.06	0.66	0	-	-
TOTALS		159.7 2(*)	100%	40.79	35.65	4.47









(*) Total acres may differ in the second decimal compared to the sum of each acreage soil. This is due to a round error because we only show the acres of each soil with two decimal.

Capability Legend

Increased Limitations and Hazards

Decreased Adaptability and Freedom of Choice Users

Land, Capability

								
	1	2	3	4	5	6	7	8
'Wild Life'	•	•	•	•	•	•	•	•
Forestry	•	•	•	•	•	•	•	
Limited	•	•	•	•	•	•	•	
Moderate	•	•	•	•	•	•		
Intense	•	•	•	•	•			
Limited	•	•	•	•				
Moderate	•	•	•					
Intense	•	•						
Very Intense	•							

Grazing Cultivation

(c) climatic limitations (e) susceptibility to erosion

(s) soil limitations within the rooting zone (w) excess of water